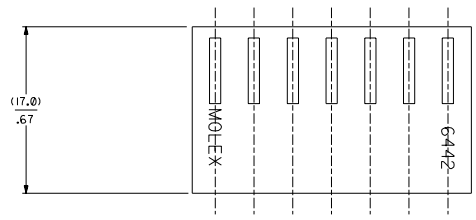


SECTION "C-C"



NO. OF CKT'S.	DIM. A	DIM. B
1	-----	(4.78+.18)
2	(3.96+.13)	.188+.007
	.156+.005	.344+.007
3	(7.92+.13)	(8.74+.18)
	.312+.005	.500+.007
4	(11.89+.13)	(12.70+.18)
	.468+.005	.656+.007
5	(15.85+.13)	(16.66+.18)
	.624+.005	.812+.007
6	(19.81+.13)	(20.62+.18)
	.780+.005	.968+.007
7	(23.77+.13)	(24.59+.18)
	.936+.005	1.124+.007
8	(27.74+.25)	(28.55+.18)
	1.092+.010	1.280+.012
9	(31.70+.25)	(32.51+.30)
	1.248+.010	1.436+.012
10	(35.66+.25)	(36.47+.30)
	1.404+.010	1.592+.012
11	(39.62+.25)	(40.44+.30)
	1.560+.010	1.748+.012
12	(43.59+.25)	(44.40+.30)
	1.716+.010	1.904+.012
13	(47.55+.30)	(48.36+.30)
	1.872+.012	2.060+.014
14	(51.51+.36)	(52.32+.36)
	2.028+.014	2.216+.016
15	(55.47+.36)	(56.29+.41)
	2.184+.014	2.372+.016
16	(59.44+.36)	(60.25+.41)
	2.340+.014	2.528+.016
17	(63.40+.36)	(64.21+.41)
	2.496+.014	2.684+.016
18	(67.36+.36)	(68.17+.41)
	2.652+.014	2.840+.016
19	(71.32+.36)	(72.14+.41)
	2.808+.014	2.996+.016
20	(75.29+.46)	(76.10+.41)
	2.964+.018	3.152+.020
21	(79.25+.46)	(80.06+.51)
	3.120+.018	3.308+.020
22	(83.21+.46)	(84.02+.51)
	3.276+.018	3.464+.020
23	(87.17+.46)	(87.99+.51)
	3.432+.018	3.620+.020
24	(91.14+.46)	(91.95+.51)
	3.588+.018	3.776+.020

- NOTES :
- HOUSING SHOWN ABOVE IS STANDARD HOUSING WITH NO OPTIONS.
 - THIS HOUSING FOR USE WITH TERMINAL NO. 6438-*, (18-22 GA.) WITH (2.79/.110) MAX. INSULATION DIA. 6838-*, (18-24 GA.) WITH (2.79/.110) MAX. INSULATION DIA. 7258-*, (22-26 GA.) WITH (1.65/.065) MAX. INSULATION DIA.
 - CIRCUIT SIZE MOLDED ON 4 THRU 24 CIRCUIT HOUSINGS ONLY.
 - SEE SHEET 2 FOR OPTIONS.
 - THIS PART COMPLIES WITH PROD. SPEC. 40-02.
 - MATERIAL: SEE LEGEND FOR MATERIAL CODE.

6442- * N - * - * - *

HOUSING OPTIONS

CODE	HOOKS	SIDE HOOKS	RAMP
BLANK	NONE	NONE	NONE
A	NONE	YES	NONE
R	NONE	NONE	FRICTION
B	NONE	NONE	TYPE B
C	NONE	NONE	TYPE C
D	NONE	NONE	TYPE D

VOLTAGE RATING OPTION
BLANK=NONE
V= *250 VAC* ON HOUSING

MAT'L. OPTION
BLANK=NYLON 6/6, 94V-2.

MOLDED VOID CODE
Z=NO VOIDS
A=CKT. 1 VOID,
B=CKT. 2 VOID, ETC.
51=1ST MULTIPLE VOID,
52=2ND MULTIPLE VOID, ETC.

NO. OF CKT'S. _____

4	G4	DELETE DYED PARTS
3	H	UCP2003-5590
2	F	BY 02/03 SCHAFER
1	H	G4 DEL UNTOOLED
		UCP2003-0794
		11/12/2003 SAMIEC

MFG. SH. REV. LTR. REVISIONS

DIMENSIONS SHOWN METRIC INCH

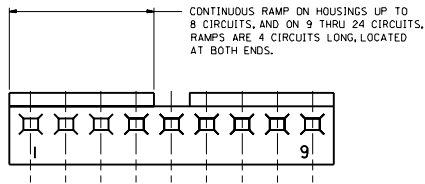
SCALE: 1" = 1" (1:1)

DATE: 12/3/86

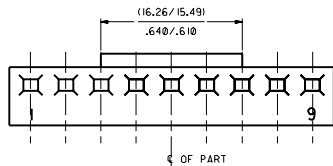
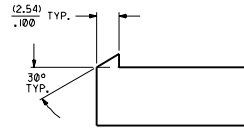
FILE NO. SD-6442

SEE CHART

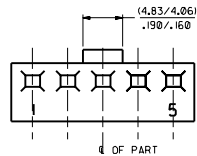
SD-6442



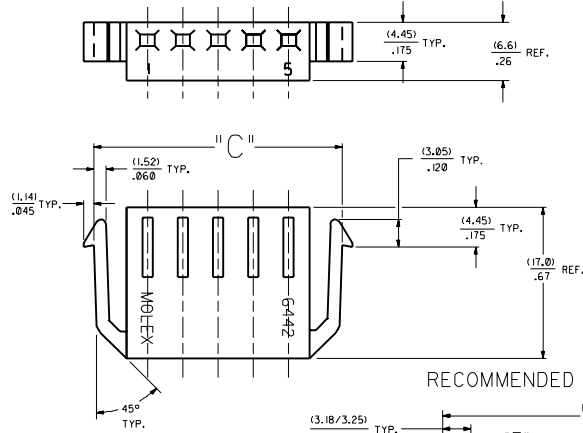
STD. RAMP OPTION CODE "R"



SELECTIVE RAMP
OPTION CODE "C"

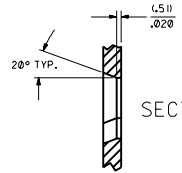
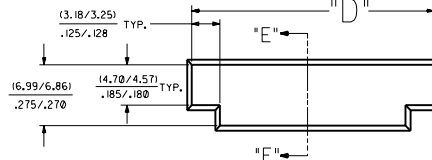


SELECTIVE RAMP
OPTION CODE "B"



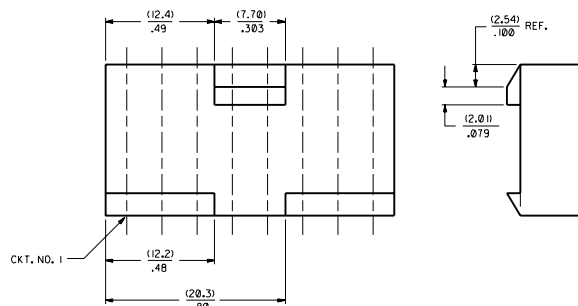
SIDE HOOKS
OPTION CODE "A"

RECOMMENDED (2.03) / .080 THICK PANEL OPENING.

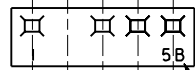


SECT. "E-E"

NO. OF CKT S.	DIM. "C"	DIM. "D"
2	(16.48 / 15.60) .649 / .614	(15.47 / 15.34) .609 / .604
3	(20.45 / 19.56) .805 / .770	(19.43 / 19.30) .765 / .760
5	(28.37 / 27.48) 1.117 / 1.082	(27.36 / 27.23) 1.077 / 1.072

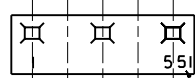


SELECTIVE RAMP OPTION CODE "D"
INTERNATIONAL PART ONLY
(8 CKT. PART ONLY)



SINGLE VOID

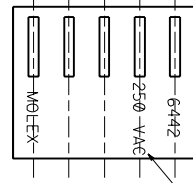
SINGLE CKT. VOID CODE



MULTIPLE VOIDS

MULTIPLE CKT. VOID CODE

MOLDED VOIDS
SEE LEGEND ON SHT. 1
SEE CHART FOR VOID CKT. LOCATIONS



SEE LEGEND ON SHT. 1

OPT. VOLTAGE RATING

SEE SHEET 1		SEE SHEET 1		DIMENSIONS SHOWN IN METRIC UNITS		REVISE ONLY ON CAD SYSTEM	
SEE SHEET 1	SEE SHEET 1	SEE SHEET 1	SEE SHEET 1	UNITS: INCH	SCALE: 1:1	DATE: 12/12/96	DWG. NO. SD-6442
SEE SHEET 1	SEE SHEET 1	SEE SHEET 1	SEE SHEET 1	TYPICAL: .014 ± 0.25	PRECISION: ± 0.36	SHEET NO. 2	TITLE: HOUSING, FOR TRIFURCON TERM., 6442 SERIES DWG.
SEE SHEET 1	SEE SHEET 1	SEE SHEET 1	SEE SHEET 1	MOLEX INCORPORATED			
SEE SHEET 1	SEE SHEET 1	SEE SHEET 1	SEE SHEET 1	MOLDED VOIDS			
SEE SHEET 1	SEE SHEET 1	SEE SHEET 1	SEE SHEET 1	SEE CHART			
SEE SHEET 1	SEE SHEET 1	SEE SHEET 1	SEE SHEET 1	MATERIAL: POLYCARBONATE			
SEE SHEET 1	SEE SHEET 1	SEE SHEET 1	SEE SHEET 1	DIELECTRIC: 2.0			
SEE SHEET 1	SEE SHEET 1	SEE SHEET 1	SEE SHEET 1	TEMPERATURE: 125°C			
SEE SHEET 1	SEE SHEET 1	SEE SHEET 1	SEE SHEET 1	MATERIAL: POLYCARBONATE			

